



# MF RANGE



# About Metro Facades

Metro Facades successfully services the building and construction industry with the widest range of the highest quality premium facade solutions and double-glazed windows.

Decades of experience mean this proud South Australian owned and operated organisation deliver best-in-class windows to both residential and commercial developments Australia wide.

The MF range has a strong focus on architectural trends, thermal performance and elegant finishing, further reinforcing the highest standards of Metro Facades.

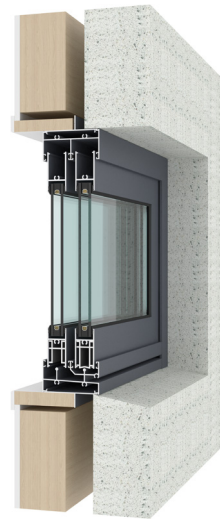
All  
windows  
AS/NZS  
certified



## Contents

01	About Metro Facades
03	MF86 Sliding Windows
05	MF86 Awning Window
07	MF86 Fixed Window
09	MF86 Double Hung Window
11	MF86 Glass Louvre
13	MF86 Sliding Door
15	MF86 Swing Door
17	MF86 Bifolding Door
19	MF100 Sliding Windows
21	MF100 Awning Window
23	MF100 Fixed Window
25	MF100 Glass Louvre
27	MF100 Sliding Door
29	MF100 Swing Door
31	MF100 Bifolding Door
33	MFT70 Awning Windows
35	MFT70 Fixed Windows
37	MFT100 Sliding Door
39	Hinged Door
45	MFT100 Sliding Window
46	Flyscreen Selections
47	Glass Selections
49	Fixing Method
51	Powder Coating





# SLIDING WINDOWS MF86

Much like sliding doors, sliding windows open horizontally, by sliding along rails. Sliding windows are easy to use, low maintenance, and economical. Sliding windows also offer the possibility of having very large windows which can be easily opened without significant effort.

### Standard: AS2047

- > Design SLS/ULS: 600Pa/2000Pa
- > Design Water Resistance: 200Pa
- > Sound Insulation: <36DB
- > WERS Data: Uw Range: 3.5 - 6.4
- > SHGC Range: 0.33 - 0.60



### Technical characteristics

Maximum height	1800mm
Maximum window panel width	1500mm
Maximum adaptive weight	80kg
Available glazing	Double glazed - up to 22mm IGU
Frame depth	85mm
Bottom frame height	45mm
Extrusion profiles	6063-T5 with 1.6mm Thickness
Powder Coating	AKZO-NOBLE Interpon Powder with 10 Years Warranty
Flyscreen	Fiberglass and Stainless Steel Security Mesh Available
Fixing Method	Sub sill/head/Fin fix/face fix/Timber reveal
Hardware	Doric



### Hardware selections

- > Brand: Doric
- > Origin Country: Australia
- > Model: DS6005
- > Colour: Black, Silver

The DS6005 Avon Sliding window lock has a sleek contemporary design with a large, easy to grab handle.



### Hardware selections

- > Brand: Doric
- > Origin Country: Australia
- > Model: DN560
- > Colour: Black, Silver

The DN560 sliding window lock is the perfect compliment for windows that demand style.





# AWNING WINDOWS MF86

As the awning window's chain winder is located on the sill, these windows can be positioned higher up along the wall to limit anyone being able to see in, whilst still allowing in all the fresh air and natural light. Alternatively, if this type of window is used in a bathroom, using obscure glass allows you to use this window for ventilation whilst still getting all the benefits of the privacy glass.

### Standard: AS2047

- > Design SLS/ULS: 1200Pa/4000Pa
- > Design Water Resistance: 450Pa
- > Sound Insulation: <38DB
- > WERS Data: Uw Range: 4.6 - 6.9
- > SHGC Range: 0.28 - 0.46

### Technical characteristics

Maximum height	2100mm
Maximum window panel width	2100mm
Maximum adaptive weight	80kg
Available glazing	Double glazed - up to 22mm IGU
Frame depth	85mm
Bottom frame height	54mm
Extrusion profiles	6063-T5 with 1.6mm Thickness
Powder Coating	AKZO-NOBLE Interpon Powder with 10 Years Warranty
Flyscreen	Fiberglass and Stainless Steel Security Mesh Available
Fixing Method	Sub sill/head/Fin fix/ Timber reveal
Hardware	Doric



### DS1 Chainwinder

- > Brand: Doric
- > Origin Country: Australia
- > Model: DS1
- > Colour: Black, Silver

Being the industry leader, the DS1 Chainwinder allows for easy operation and installation in a secure key lockable configuration.



### DN400 Twin Chainwinder

- > Brand: Doric
- > Origin Country: Australia
- > Model: DN400
- > Colour: Black, Silver

The DN400 Twin Chainwinder can be pre-restricted in order to comply with the NCC and to meet the requirements of Kids Don't Fly.



# FIXED WINDOW MF86



Fixed windows can help keep your room warm in winter and cool in summer, making for effective energy savings and climate control.

**Standard: AS2047**

- > Design SLS/ULS: 1200Pa/4000Pa
- > Design Water Resistance: 600Pa
- > Sound Insulation: <38DB
- > WERS Data: Uw Range: 2.9 - 6.3
- > SHGC Range: 0.40 - 0.73

**Technical characteristics**

Maximum height	2700mm
Maximum window panel width	2400mm
Maximum adaptive weight	200kg
Available glazing	Double glazed - up to 22mm IGU
Frame depth	85mm
Bottom frame height	54mm
Extrusion profiles	6063-T5 with 2.0mm Thickness
Powder Coating	AKZO-NOBLE Interpon Powder with 10 Years Warranty
Flyscreen	Fiberglass and Stainless Steel Security Mesh Available
Fixing Method	Sub sill/head/Fin fix/ Timber reveal
Hardware	Without





# DOUBLE HUNG WINDOW MF86



Aluminium double hung windows offer a simple aesthetic that is ideal for a variety of different interior and exterior styles.

Their minimalistic design conceals a spring balanced operating system and internal rivets. The vertical sliding of our aluminium double hung windows allows for effortless ventilation, with the added benefits of easy cleaning and low maintenance.

### Standard: AS2047

- > Design SLS/ULS: 1000 - 3000Pa
- > Design Water Resistance: 250Pa
- > Sound Insulation: <38DB
- > WERS Data: Uw Range: 2.6 - 3.6
- > SHGC Range: 0.32 - 0.65

### Technical characteristics

Maximum height	1000mm
Maximum window panel width	1200mm
Maximum adaptive weight	25kg
Available glazing	Double glazed - up to 22mm IGU
Frame depth	83mm
Bottom frame height	65mm
Extrusion profiles	6063-T5 with 1.4mm Thickness
Powder Coating	AKZO-NOBLE Interpon Powder with 10 Years Warranty
Flyscreen	Fiberglass and Stainless Steel Security Mesh Available
Fixing Method	Sub sill/head/Fin fix/ Timber reveal
Hardware	USA-Caldwell



### Quick Tilt Application

- > Brand: USA-Caldwell
- > Origin Country: USA
- > Model: RS-TS02
- > Colour: Black, White

Double hung windows come pre-assembled, reducing window assembly time. The integrated coil and cover also minimizes contamination and debris, making them easy to clean and a low maintenance solution.



### Commercial New Construction

- > Brand: USA-Caldwell
- > Origin Country: USA
- > Model: RS-TS01
- > Colour: Black, White

This fixture has an AMAA Class 5 rating, with high lift assistance, making the sash easy to operate. The boosted force curve also allows the window to fit many common balance pockets.





# GLASS LOUVRE MF86

Glass louvres are the perfect addition to any living space, and with several glass options to choose from, so you can ensure the perfect view. Durable and stylish, they strike a unique balance of effortless luxury.

### Standard: AS2047

- > Design SLS/ULS: 400Pa/1200Pa
- > Design Water Resistance: 150Pa
- > Sound Insulation: <28DB
- > WERS Data: Uw Range: 0.45 - 0.65
- > SHGC Range: 0.45 - 0.76



### Technical characteristics

Maximum height	2700mm
Maximum window panel width	800mm
Maximum adaptive weight	10kg
Available glazing	Double glazed - up to 6mm IGU
Frame depth	85mm
Bottom frame height	45mm
Extrusion profiles	6063-T5 with 2.0mm Thickness
Powder Coating	AKZO-NOBLE Interpon Powder with 10 Years Warranty
Fixing Method	Sub sill/head/Fin fix/ Timber reveal
Hardware	Doric



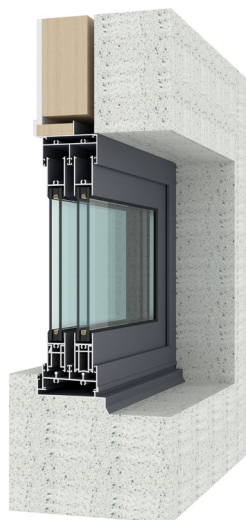
### Doric Louvre

> Colour: Black, White, Silver

Louvres are the ideal window solution to creating an open and functional living environment. The glass is non-scratch, with a UV-stabilised powder coat and a 100% opening advantage and ergonomic handle design.



# SLIDING DOOR MF86



Sliding doors open horizontally. They sit on wheels or are suspended on a track, unlike standard doors which are suspended on hinges and open by turning. Sliding doors are commonly used for bathrooms and external glass doors. Sliding doors save space, allow maximum light, and can create an open and spacious appearance.

## Standard: AS2047

- > Design SLS/ULS: 600Pa/1400Pa
- > Design Water Resistance: 200Pa
- > Sound Insulation: <36DB
- > WERS Data: Uw Range: 3.0 - 3.8
- > SHGC Range: 0.33 - 0.59

## Technical characteristics

Maximum height	2700mm
Maximum window panel width	1200mm
Maximum adaptive weight	150kg
Available glazing	Double glazed - up to 22mm IGU
Frame depth	85mm
Bottom frame height	45mm
Extrusion profiles	6063-T5 with 2.0mm Thickness
Powder Coating	AKZO-NOBLE Interpon Powder with 10 Years Warranty
Flyscreen	Fiberglass and Stainless Steel Security Mesh Available
Fixing Method	Sub sill/head/Fin fix/ Timber reveal
Hardware	Doric



## Hardware selections

- > Brand: Doric
- > Origin Country: Australia
- > Model: DS3130
- > Colour: Black, Silver

The DS3130 Timbarra Twin Sliding Patio Door Lock was the first non-handed twin actuator system to be offered in the Australian market.



## Hardware selections

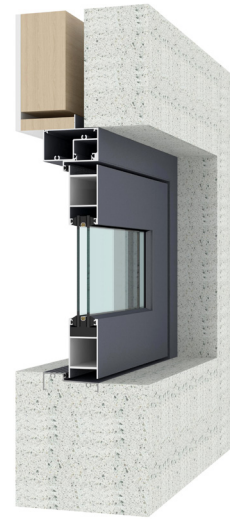
- > Brand: Doric
- > Origin Country: Australia
- > Model: DS930
- > Colour: Black, Silver

The DS930 handle range has the flexibility for various configurations and handle shapes. This patio door furniture features simple snib operation as well as a clean and contemporary aesthetic, which is ideal for apartment and residential application.





# SWING DOOR MF86



Hinged opening doors are traditionally the first option that most people consider when looking for a new or replacement door. They can be left or right opening depending on your preference and space.

**Standard: AS2047**

- > Design SLS/ULS: 600Pa/1400Pa
- > Design Water Resistance: 200Pa
- > Sound Insulation: <36DB
- > WERS Data: Uw Range: 3.7 - 6.2
- > SHGC Range: 0.32 - 0.57

**Technical characteristics**

Maximum height	2700mm
Maximum window panel width	1100mm
Maximum adaptive weight	150kg
Available glazing	Double glazed - up to 26mm IGU
Frame depth	105mm
Bottom frame height	26mm
Extrusion profiles	6063-T5 with 2.0mm Thickness
Powder Coating	AKZO-NOBLE Interpon Powder with 10 Years Warranty
Flyscreen	Fiberglass and Stainless Steel Security Mesh Available
Fixing Method	Sub sill/head/Fin fix/ Timber reveal
Hardware	Doric



**DS1400 Hinged Door Lock**

- > Brand: Doric
- > Origin Country: Australia
- > Model: DS1400
- > Colour: Black, Silver

The DS1400 Series range is finished in Satin Black powdercoat, with the levers and escutcheon manufactured from cast aluminium. It is easy to install and suitable for hinged doors in single, French & bi-fold door.



**DS7300 Hinged Door Lock**

- > Brand: Doric
- > Origin Country: Australia
- > Model: DN7300
- > Colour: Metallic

The DN7300 Series is compatible for use with the Doric DN995 (23mm/30mm/38mm) Commercial narrow back-set mortice lock mechanism in a wide variety of functions that will suit all commercial locking requirements in Australia and New Zealand.

# BIFOLDING DOOR MF86



Aluminum bifold doors are more than just stylish – they are manufactured to last and provide durable performance. Their minimalist design aesthetic create a seamless statement in a variety of spaces, while the folding functionality opens up the possibilities to perfectly complement alfresco style dining or entertaining areas.

**Standard: AS2047**

- > Design SLS/ULS: 800Pa/2000Pa
- > Design Water Resistance: 200Pa
- > Sound Insulation: <36DB
- > WERS Data: Uw Range: 3.0 - 4.2
- > SHGC Range: 0.36 - 0.52

**Technical characteristics**

Maximum height	3000mm
Maximum window panel width	850mm
Maximum adaptive weight	150kg
Available glazing	Double glazed - up to 32mm IGU
Frame depth	77.3mm
Bottom frame height	53mm
Extrusion profiles	6063-T5 with 2.0mm Thickness
Powder Coating	AKZO-NOBLE Interpon Powder with 10 Years Warranty
Fixing Method	Sub sill/head/Fin fix/ Timber reveal
Hardware	China Brand



**Bifolding Door**

- > Brand: China Brand KSBG
- > Origin Country: China
- > Model: KSBG-80
- > Colour: Black, Silver

The KSBG-80 has an automatic lock function, with hardware hidden design to satisfy any combination of folds. Corner design with wide vision.





# SLIDING WINDOWS MF100



Much like sliding doors, sliding windows open horizontally, by sliding along rails. Sliding windows are easy to use, low maintenance, and economical. Sliding windows also offer the possibility of having very large windows which can be easily opened without significant effort.

### Standard: AS2047

- > Design SLS/ULS: 600Pa/2000Pa
- > Design Water Resistance: 200Pa
- > Sound Insulation: <36DB
- > WERS Data: Uw Range: 3.5 - 6.4
- > SHGC Range: 0.33 - 0.60

### Technical characteristics

Maximum height	1800mm
Maximum window panel width	1500mm
Maximum adaptive weight	80kg
Available glazing	Double glazed - up to 26mm IGU
Frame depth	105mm
Bottom frame height	45mm
Extrusion profiles	6063-T5 with 1.6mm Thickness
Powder Coating	AKZO-NOBLE Interpon Powder with 10 Years Warranty
Flyscreen	Fiberglass and Stainless Steel Security Mesh Available
Fixing Method	Sub sill/head/Fin fix/face fix/Timber reveal
Hardware	Doric



### Hardware selections

- > Brand: Doric
- > Origin Country: Australia
- > Model: DS6005
- > Colour: Black, Silver

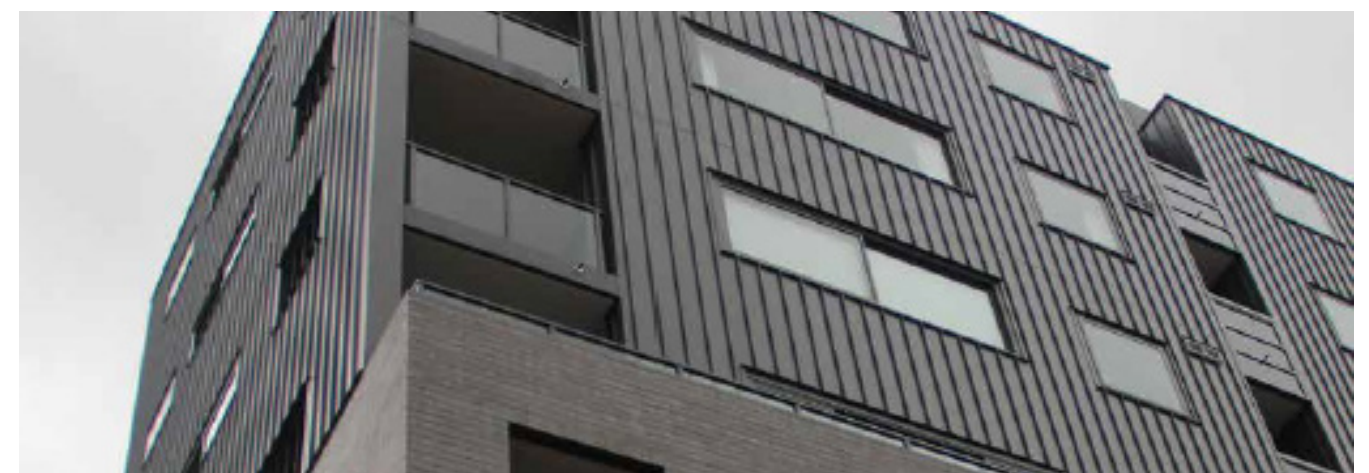
The DS6005 Avon Sliding window lock has a sleek contemporary design with a large, easy to grab handle.



### Hardware selections

- > Brand: Doric
- > Origin Country: Australia
- > Model: DN560
- > Colour: Black, Silver

The DN560 sliding window lock is the perfect compliment for windows that demand style.





# CHAIN WINDER AWNING WINDOW MF100

As the awning window's chain winder is located on the sill, these windows can be positioned higher up along the wall to limit anyone being able to see in, whilst still allowing in all the fresh air and natural light. Alternatively, if this type of window is used in a bathroom, using an obscure glass allows you to use this window for ventilation while still getting all the benefits of the privacy glass.

## Standard: AS2047

- > Design SLS/ULS: 1200Pa/4000Pa
- > Design Water Resistance: 450Pa
- > Sound Insulation: <38DB
- > WERS Data: Uw Range: 4.6 - 6.9
- > SHGC Range: 0.28 - 0.46

## Technical characteristics

Maximum height	2400mm
Maximum window panel width	2400mm
Maximum adaptive weight	100kg
Available glazing	Double glazed - up to 26mm IGU
Frame depth	105mm
Bottom frame height	54mm
Extrusion profiles	6063-T5 with 2.0mm Thickness
Powder Coating	AKZO-NOBLE Interpon Powder with 10 Years Warranty
Flyscreen	Fiberglass and Stainless Steel Security Mesh Available
Fixing Method	Sub sill/head/Fin fix/ Timber reveal
Hardware	Doric



## DS1 Chainwinder

- > Brand: Doric
- > Origin Country: Australia
- > Model: DS1
- > Colour: Black, Silver

Being the industry leader, the DS1 Chainwinder allows for easy operation and installation in a secure key lockable configuration.



## DN400 Twin Chainwinder

- > Brand: Doric
- > Origin Country: Australia
- > Model: DN400
- > Colour: Black, Silver

The DN400 Twin Chainwinder can be pre-restricted in order to comply with the NCC and to meet the requirements of Kids Don't Fly.







# FIXED WINDOW MF100

Fixed window can help keep your room warm in winter and cool in the summer, making for effective energy saving and climate control.

**Standard: AS2047**

- > Design SLS/ULS: 1200Pa/4000Pa
- > Design Water Resistance: 600Pa
- > Sound Insulation: <40DB
- > WERS Data: Uw Range: 2.9 - 6.3
- > SHGC Range: 0.40 - 0.73

**Technical characteristics**

Maximum height	3000mm
Maximum window panel width	3000mm
Maximum adaptive weight	300kg
Available glazing	Double glazed - up to 26mm IGU
Frame depth	105mm
Bottom frame height	54mm
Extrusion profiles	6063-T5 with 2.0mm Thickness
Powder Coating	AKZO-NOBLE Interpon Powder with 10 Years Warranty
Flyscreen	Fiberglass and Stainless Steel Security Mesh Available
Fixing Method	Sub sill/head/Fin fix/ Timber reveal
Hardware	Without







# GLASS LOUVRE MF100

Glass louvre is the perfect addition to any living space, and with several glass options to choose from, you can ensure the perfect view. Durable and stylish, they strike a unique balance of effortless luxury.

### Standard: AS2047

- > Design SLS/ULS: 400Pa/1200Pa
- > Design Water Resistance: 150Pa
- > Sound Insulation: <28DB
- > WERS Data: Uw Range: 0.45 - 0.76
- > SHGC Range: 0.45 - 0.76



### Technical characteristics

Maximum height	2700mm
Maximum window panel width	800mm
Maximum adaptive weight	10kg
Available glazing	Double glazed - up to 6mm IGU
Frame depth	105mm
Bottom frame height	50mm
Extrusion profiles	6063-T5 with 2.0mm Thickness
Powder Coating	AKZO-NOBLE Interpon Powder with 10 Years Warranty
Flyscreen	Fiberglass and Stainless Steel Security Mesh Available
Fixing Method	Sub sill/head/Fin fix/ Timber reveal
Hardware	Doric



### Doric Louvre

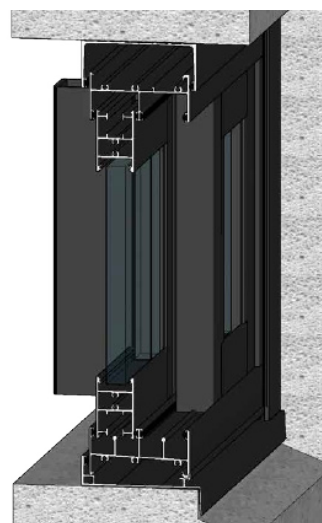
> Colour: Black, White, Silver

Louvres are the ideal window solution to creating an open functional living environment. Vent, the 100% Opening Advantage Ergonomic handle design Non-Scratch UV-stabilised powder coat.





# SLIDING DOOR MF100



Sliding doors open horizontally, and are held up by wheels or suspended on a track, unlike standard doors which are suspended on hinges and open by turning. Sliding doors are commonly used for bathrooms and for external doors made of glass. Sliding doors save space, allow maximum light, and can create an open and spacious appearance.

## Standard: AS2047

- > Design SLS/ULS: 400Pa/2000Pa
- > Design Water Resistance: 150Pa
- > Sound Insulation: <36DB
- > WERS Data: Uw Range: 3.1 - 6.1
- > SHGC Range: 0.41 - 0.67

## Technical characteristics

Maximum height	2700mm
Maximum window panel width	1200mm
Maximum adaptive weight	150kg
Available glazing	Double glazed - up to 26mm IGU
Frame depth	105mm
Bottom frame height	45mm
Extrusion profiles	6063-T5 with 2.0mm Thickness
Powder Coating	AKZO-NOBLE Interpon Powder with 10 Years Warranty
Flyscreen	Fiberglass and Stainless Steel Security Mesh Available
Fixing Method	Sub sill/head/Fin fix/ Timber reveal
Hardware	Doric



## Hardware selections

- > Brand: Doric
- > Origin Country: Australia
- > Model: DS3130
- > Colour: Black, Silver

The DS3130 Timbarra Twin Sliding Patio Door Lock was the first non-handed twin actuator system to be offered in the Australian market.



## Hardware selections

- > Brand: Doric
- > Origin Country: Australia
- > Model: DN560
- > Colour: Black, Silver

The DS2400 handle range has the flexibility for various configurations and handle shapes. The patio door furniture features simple snib operation as well as a clean and contemporary aesthetic, ideal for apartment and residential application.





# SWING DOOR MF100

Hinged opening doors are traditionally the first option that most people consider when looking for a new or replacement door. They can be left or right opening depending on your preference and space.

### Standard: AS2047

- > Design SLS/ULS: 600Pa/1400Pa
- > Design Water Resistance: 200Pa
- > Sound Insulation: <36DB
- > WERS Data: Uw Range: 3.7 - 6.2
- > SHGC Range: 0.32 - 0.57

### Technical characteristics

Maximum height	2700mm
Maximum window panel width	1100mm
Maximum adaptive weight	150kg
Available glazing	Double glazed - up to 26mm IGU
Frame depth	105mm
Bottom frame height	26mm
Extrusion profiles	6063-T5 with 2.0mm Thickness
Powder Coating	AKZO-NOBLE Interpon Powder with 10 Years Warranty
Flyscreen	Fiberglass and Stainless Steel Security Mesh Available
Fixing Method	Sub sill/head/Fin fix/ Timber reveal
Hardware	Doric



### DS1400 Hinged Door Lock

- > Brand: Doric
- > Origin Country: Australia
- > Model: DS1400
- > Colour: Black, Silver

The DS1400 Series range is finished in Satin Black powdercoat, with the levers and escutcheon manufactured from cast aluminium. It is easy to install and suitable for hinged doors in single French & bi-fold door.



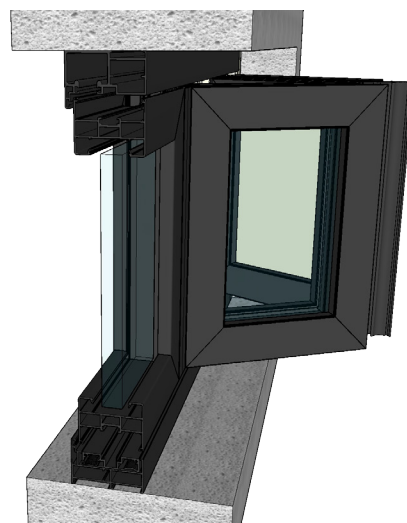
### DS7300 Hinged Door Lock

- > Brand: Doric
- > Origin Country: Australia
- > Model: DN7300
- > Colour: Metallic

The DN7300 Series is compatible for use with the Doric DN995 (23mm/30mm/38mm) Commercial narrow back-set mortice lock mechanism in a wide variety of functions that will suit all commercial locking requirements in Australia and New Zealand.



# BIFOLDING DOOR MF100



Aluminum bifolding doors are more than just stylish – they are manufactured to last and provide durable performance. Their minimalist design aesthetic create a seamless statement in a variety of spaces, while the folding functionality opens up the possibilities to perfectly complement alfresco style dining or entertaining areas.

### Standard: AS2047

- > Design SLS/ULS: 600Pa/3000Pa
- > Design Water Resistance: 200Pa
- > Sound Insulation: <38DB
- > WERS Data: Uw Range: 2.7 - 3.2
- > SHGC Range: 0.36 - 0.52

### Technical characteristics

Maximum height	3600mm
Maximum window panel width	900mm
Maximum adaptive weight	200kg
Available glazing	Double glazed - up to 26mm IGU
Frame depth	87.5mm
Bottom frame height	59mm
Extrusion profiles	6063-T5 with 2.0mm Thickness
Powder Coating	AKZO-NOBLE Interpon Powder with 10 Years Warranty
Flyscreen	Fiberglass and Stainless Steel Security Mesh Available
Fixing Method	Sub sill/head/Fin fix/ Timber reveal
Hardware	China Brand

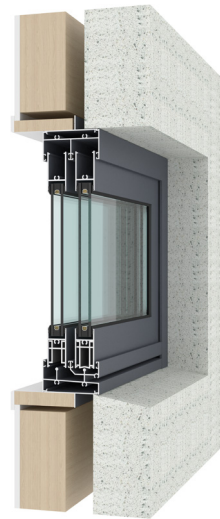


### Bifolding Door

- > Brand: China Brand KSBG
- > Origin Country: China
- > Model:
- > Colour: Black, Silver

The KSBG-80 has an automatic lock function, with hardware hidden design to satisfy any combination of folds. Corner design with wide vision.





# AWNING WINDOWS

## MFT70

### THERMAL BREAK

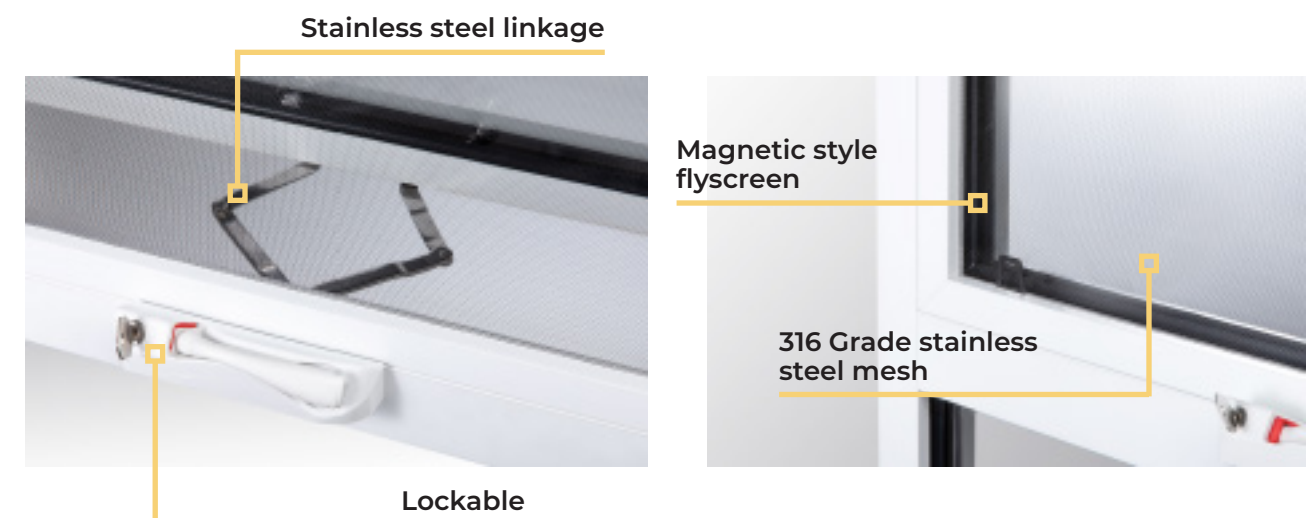
The MFT70 series window system has been designed using slim line features including 44 mm width and 70 mm depth of frame, mullion, and transom options with 1.8 mm internal radius. Square external glazing beads are standard. The extra strong sash allows large sash windows to be fabricated for high wind load areas. The system has been tested for compliance with the relevant Australian standards, achieving very high ultimate strength of 3300 Pa and water resistance of 300 Pa, and low air infiltration. Designed with a magnetic stainless steel screen mesh and stainless steel linkage winder with keyed. It can be paired with Crimsafe® heavy duty/fire rate screening system.

#### Technical characteristics

Maximum height	2400mm
Maximum window panel width	2400mm
Available glazing	Double glazed - up to 6mm
Frame depth	70mm
Bottom frame height	44mm
Extrusion profiles	1.8mm Thickness Aluminium
Powder Coating	AKZO-NOBLE Interpon Powder with 10 Years Warranty
Flyscreen	Stainless Steel Mesh with magnetic style
Fixing Method	Sub Frame/Fin Fix/Timber reveal
Hardware	ACME

#### Standard: AS2047

- > Ultimate Strength: 3300 Pa
- > Design Water Resistance: 300Pa
- > Air Infiltration: 75 Pa
- > Wind Load: N5
- > Sound Insulation: 34 - 42DB
- > U Value: 2.5 - 3.2
- > SHGC Range: 0.3 - 0.53







# FIXED WINDOWS

## MFT70

### THERMAL BREAK

The MFT70 series window system has been designed using slim line features including 44 mm width and 70 mm depth of frame, mullion, and transom options with 1.8 mm internal radius. Square external glazing beads are standard. The extra strong sash allows large sash windows to be fabricated for high wind load areas. The system has been tested for compliance with the relevant Australian standards, achieving very high ultimate strength of 3300 Pa and water resistance of 300 Pa, and low air infiltration.

Fixed windows can help keep your room warm in winter and cool in summer, making for effective energy savings and climate control.

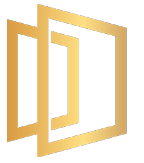
#### Standard: AS2047

- > Ultimate Strength: 3300Pa
- > Design Water Resistance: 300Pa
- > Air Infiltration: 75Pa
- > Wind Load: N5
- > Sound Insulation: 33 - 41DB
- > U Value: 1.9 - 2.8
- > SHGC Range: 0.28 - 0.46

#### Technical characteristics

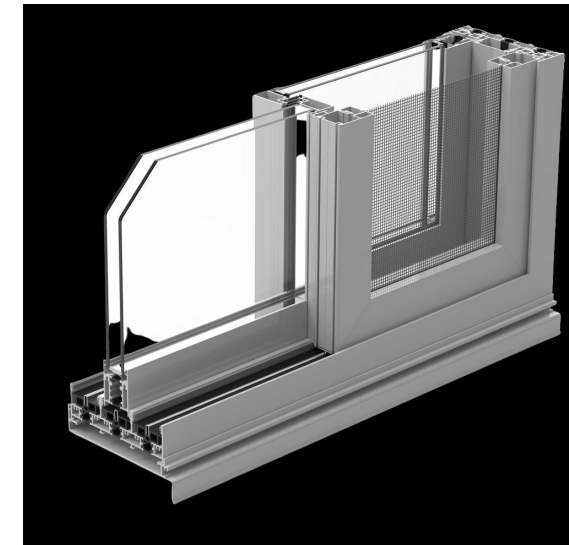
Maximum height	2400mm
Maximum window panel width	3300mm
Available glazing	Double glazed - up to 6mm
Frame depth	70mm
Bottom frame height	44mm
Extrusion profiles	1.8mm Thickness
Powder Coating	AKZO-NOBLE Interpon Powder with 10 Years Warranty
Flyscreen	/
Fixing Method	Sub Frame/Fin Fix/Timber reveal
Hardware	/





# SLIDING DOOR MFT100

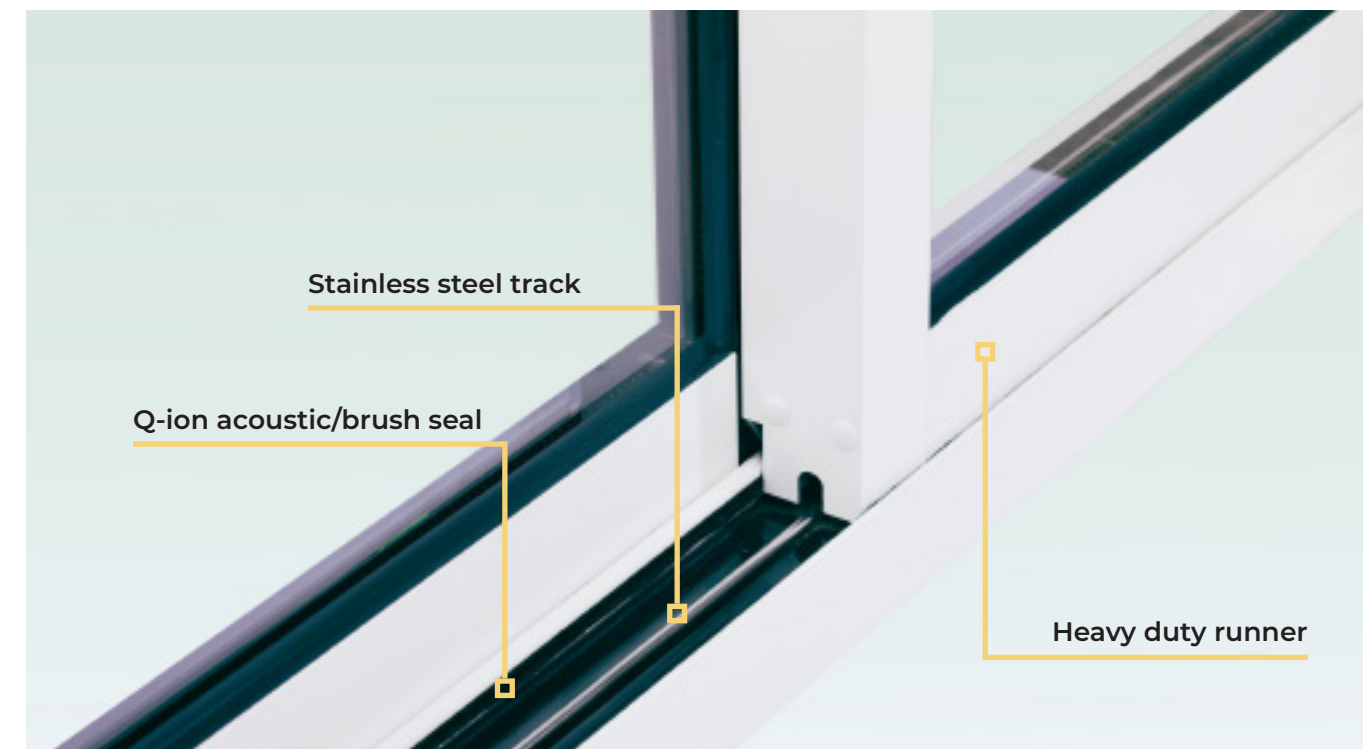
THERMAL BREAK



Our architecturally designed sliding door system, which is thermally broken incorporates slim design features within a platform purposely created for modern residential applications. The thermal break reduces the straight-line heat transfer (both outwards on cold days, and inwards on warm days.) Integrated with stainless steel tracks, heavy duty nylon runners and mesh screens for smooth, quiet operation and home security. This series features a unique system with up to five sliding panels in each direction. Our system has been tested for compliance with the relevant Australian standards, achieving very high ultimate strength of 3300 Pa and water resistance of 300 Pa and low air infiltration. It can be paired with MFT own heavy duty screen door or the Brio 612® retractable or Crimsafe® heavy duty / fire rate screening system.

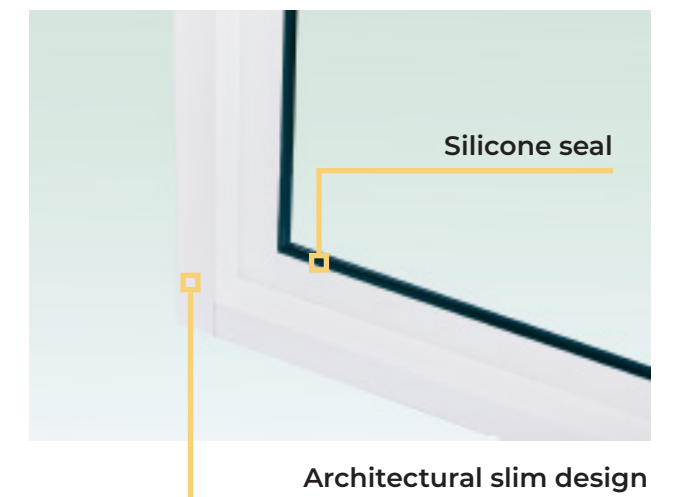
## Technical characteristics

Maximum height	3000mm
Maximum window panel width	1700mm
Available glazing	Double glazed - up to 6mm
Frame depth	100mm
Bottom frame height	45mm
Extrusion profiles	1.8mm Thickness Aluminium
Powder Coating	AKZO-NOBLE Interpon Powder with 10 Years Warranty
Flyscreen	Heavy Duty Stainless steel flyscreen door
Fixing Method	Sub Frame/Fin Fix/Timber reveal
Hardware	Doric/Lockwood/specified



## Standard: AS2047

- > Ultimate Strength: 3300Pa
- > Design Water Resistance: 300Pa
- > Air Infiltration: 30-33DB
- > Wind Load: N5
- > Sound Insulation: 30-33Pa
- > U Value: 2.1 - 2.9
- > SHGC Range: 0.35 - 0.63





# HINGED DOOR MFT100

## THERMAL BREAK

These quality commercial doors deliver excellent strength also great thermal performance and are ideal for commercial and high-end residential applications. Normally, the industry standard for stiles is 44 mm, but this door gives you a massive 55 mm thick stile that outperforms the rest, every time. The strength of the door jamb has allowed when you looking to put extra thickness of toughen and safety glass for your home security or to hang a custom solid heavy panel. This design allows the system to be integrated with Australian standard locking system of mechanical and electrical using brands such as Lockwood®, Kaba®, Legge®, and Doric®. It can be paired with the Crimsafe® heavy duty/fire rate screening system.

### Technical characteristics

Maximum height	2700mm
Maximum window panel width	1120mm
Available glazing	Double glazed - up to 6mm
Frame depth	100mm
Bottom frame height	Four types of threshold/ specified
Extrusion profiles	2.2mm Thickness Aluminium of door panel/2.0mm Thickness Aluminium of door frame
Powder Coating	AKZO-NOBLE Interpon Powder with 10 Years Warranty
Flyscreen	Fibre Glass/Heavy Duty Stainless steel/ Crime Safe Flyscreen Door
Fixing Method	Sub Frame/Fin Fix/ Timber reveal
Hardware	Doric/Lockwood/ specified



### Standard: AS2047

- > Ultimate Strength: 3300Pa
- > Design Water Resistance: 300Pa
- > Air Infiltration: 30-33DB
- > Wind Load: N5
- > Sound Insulation: 30-33Pa
- > U Value: 2.1 - 2.9
- > SHGC Range: 0.35 - 0.63











# SLIDING WINDOW MFT100

THERMAL BREAK

This architecturally designed sliding window system comes in non-thermal and thermal broken options which incorporate slim design features within a platform purposely designed for modern residential applications. Integrated with stainless steel track, nylon heavy duty runner and Doric® recessed lock and optional heavy duty mesh screen for smooth, quiet operation and your home security. To slow the time taken for the temperature outside to flow inside you can select our thermally broken window frame. These frames contain a reinforced polyamide strip (which is a specially formulated rubber). This creates a barrier which slows the rate of conduction between the window opening and the inside of the home which saves you money on heating and cooling costs. It can be paired with the Crimsafe® heavy duty/fire rate screening system.

## Technical characteristics

Maximum height	1800mm
Maximum window panel width	1500mm
Available glazing	Double glazed - up to 6mm
Frame depth	100mm
Bottom frame height	62mm
Extrusion profiles	1.8mm Thickness Aluminium
Powder Coating	AKZO-NOBLE Interpon Powder with 10 Years Warranty
Flyscreen	Stainless Steel Mesh
Fixing Method	Sub Frame/Fin Fix/Timber reveal
Hardware	Doric

# CUSTOMISATIONS FLYSCREEN SELECTIONS

## D811 Security Screen

- > Material: SUS304
- > Finishing: Powder coating
- > Thickness: 0.8mm
- > Weave: 11/m<sup>2</sup>
- > Colour: Black, Grey

## D218 Security Screen

- > Material: SUS304
- > Finishing: Powder coating
- > Thickness: 0.185mm
- > Weave: 18/m<sup>2</sup>
- > Colour: Black

## D514 Security Screen

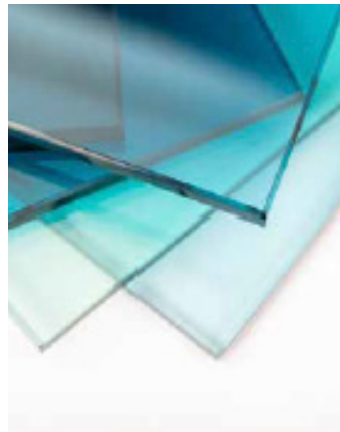
- > Material: SUS304
- > Finishing: Powder coating
- > Thickness: 0.5mm
- > Weave: 11/m<sup>2</sup>
- > Colour: Black, Grey

## 1511 Pet Screen

- > Material: 30% fabric, 70% PVC coating
- > Finishing: Powder coating
- > Weave: 360g/m<sup>2</sup>
- > Weave: 15\*11/inch
- > Colour: Black

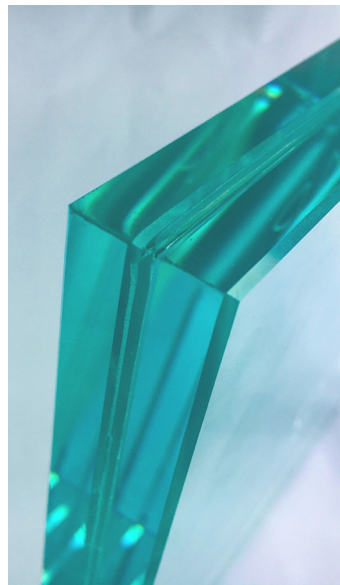


# CUSTOMISATIONS GLASS SELECTIONS



## Single Glass

- > Thickness: 5mm/6mm/8mm/10mm/12mm
- > Treatment: tempered, heat soaked, thermally tempered
- > Colour: ultra clear, clear, obscure, tint
- > Finishing: reflective, spendral
- > Feature: safe, strength wind pressure, high impact resistance



## Laminated Glass

- > Thickness: 8.76mm/10.76mm/11.14mm/12.76mm/13.14mm
- > Treatment: tempered, heat soaked, thermally tempered
- > Vinyl Interlayer: PVB
- > Interlayer Thickness: 0.38mm/0.76mm/1.14mm
- > Colour: ultra clear, clear, obscure, tint
- > Finishing: reflective, spendral
- > Feature: safe, strength wind pressure, high impact resistance, reduce noise

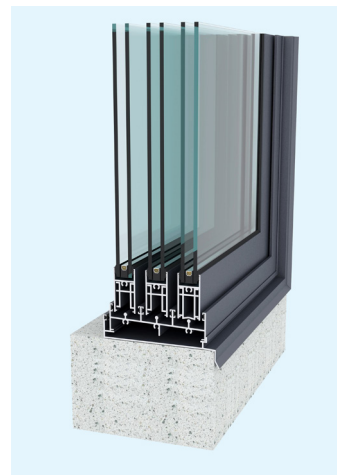
# CUSTOMISATIONS GLASS SELECTIONS



## Double Glass

- > Thickness: 6mm+12A+6mm/6mm+12A+8.76mm /6mm+9A+10.76mm
- > Glass Spacer Colour: silver/black
- > Gas: air/argon
- > Treatment: tempered, heat soaked, thermally tempered
- > Colour: ultra clear, clear, obscure, tint
- > Finishing: reflective, spendral
- > Feature: safe, strength wind pressure, high impact resistance, reduce noise, energy efficiency

# CUSTOMISATIONS FIXING METHOD



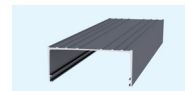
## Sub head, Sub Sill, Angle

Features: High water leakage resistance, simple installation (saving labor), safety, fast delivery

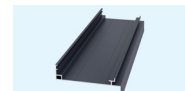
Wall structure suitable:

- > Concrete structure
- > Light Gauge and Hebel Structure
- > Double Brick Structure
- > Light Gauge and Brick Structure

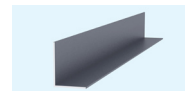
Application: Commercial Buildings, Apartment, Townhouse, Dwellings



Sub Head



Sub Sill



Angle



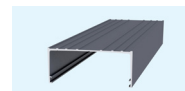
## Sub head, Sub Sill, Sub Frame

Features: High water leakage resistance, simple installation (saving labor), safety, fast delivery

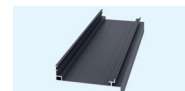
Wall structure suitable:

- > Concrete structure
- > Light gauge and hebel structure
- > Double brick structure
- > Light gauge and brick structure

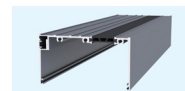
Application: Commercial Buildings, Apartment, Townhouse, Dwellings



Sub Head



Sub Sill



Sub JOMB

# CUSTOMISATIONS FIXING METHOD



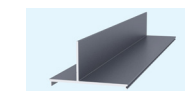
## 40mm Fin

Features: High water leakage, resistance, simple and fast installation, safety

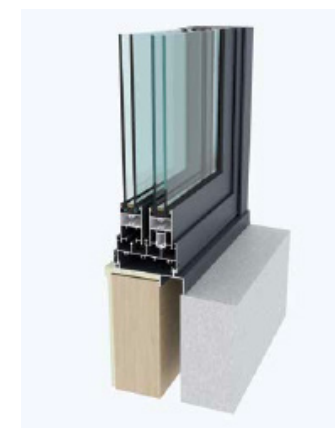
Wall structure suitable:

- > Timber stud and 100/150mm hebel structure
- > Brick veneer structure
- > Light gauge and brick structure

Application: townhouse, dwellings



40mm Fin



## Timber Reveal

Features: high water leakage resistance, simple and fast installation, safety

Wall structure suitable:

- > Timber stud and 100/150mm hebel structure
- > Brick veneer structure
- > Light gauge and brick structure

Application: townhouse, dwellings



Timber Reveal



# FINISHINGS

## POWDER COATING

### Standard Colour

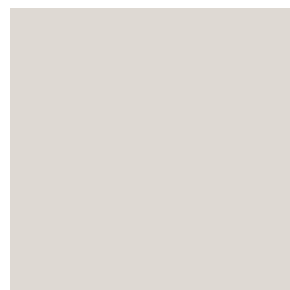
Black/Monument/Grey/White



Smooth Black  
C31122S 2 GN



Smooth Monument  
GP22PC



Light Grey  
C30520 S 2 GP



Smooth White  
C31878 S 2 GB

### Custom Colour



- > Brand: Interpon
- > Customised Colour: Colourbond or RAL swatches
- > Warranty: 10 years, higher resistance products also available

Features: safe, clean, economical and eco-friendly excellent performance Meet the wide range of global coatings standards.



[METROFACADES.COM.AU](http://METROFACADES.COM.AU)